



THE "ST. AUGUSTINE COTTAGE - A"

32'-0" WIDE BY 32'-0" DEEP

SQUARE FOOTAGE (STUD)

1st FLOOR:	610 SQ. FT.
2nd FLOOR:	750 SQ. FT.
TOTAL:	1360 SQ. FT.
FRONT PORCH:	106 SQ. FT.
GARAGE:	244 SQ. FT.

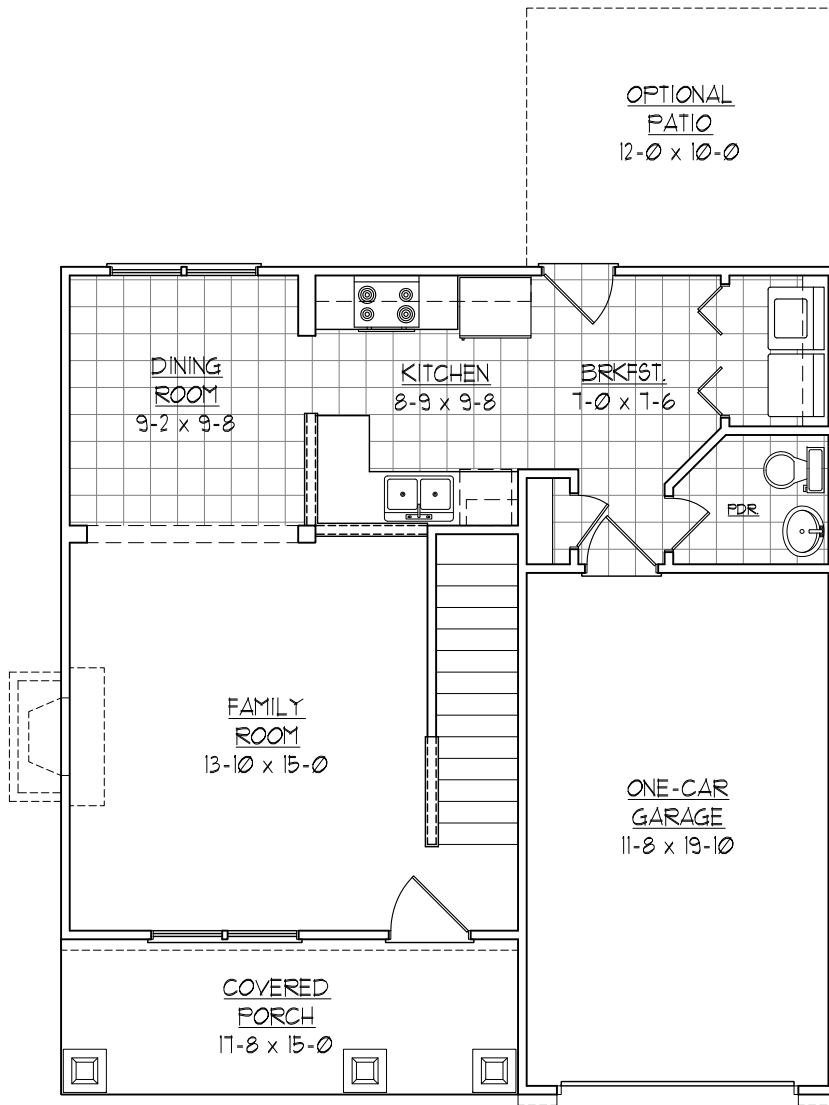


THE "ST. AUGUSTINE COTTAGE - B"

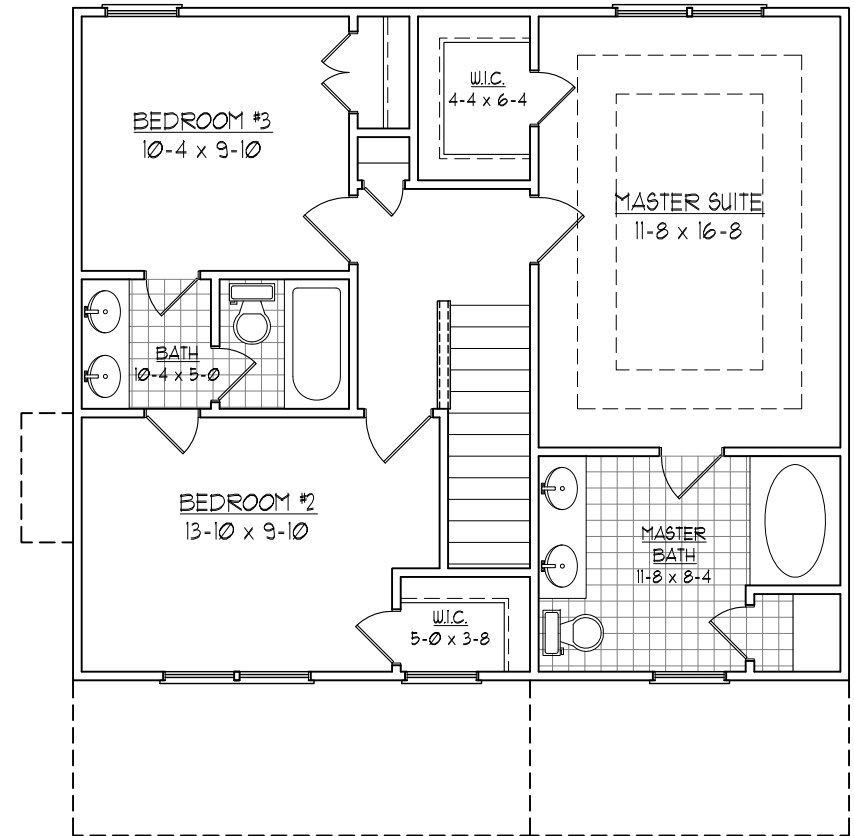
32'-0" WIDE BY 32'-0" DEEP

SQUARE FOOTAGE (STUD)

1st FLOOR:	610 SQ. FT.
2nd FLOOR:	750 SQ. FT.
TOTAL:	1360 SQ. FT.
FRONT PORCH:	106 SQ. FT.
GARAGE:	244 SQ. FT.



FIRST FLOOR PLAN



SECOND FLOOR PLAN

THE "ST. AUGUSTINE COTTAGE"